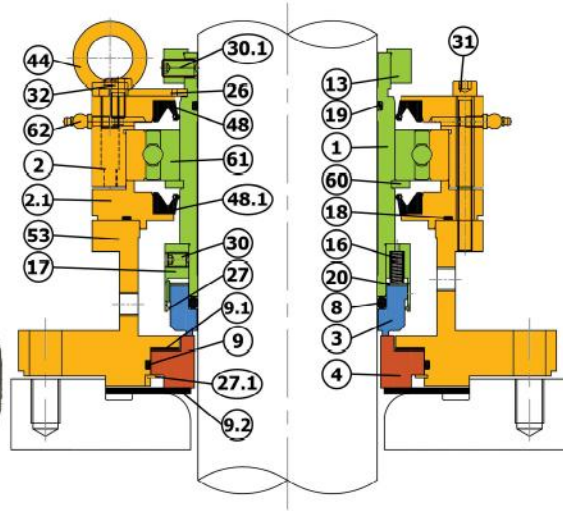
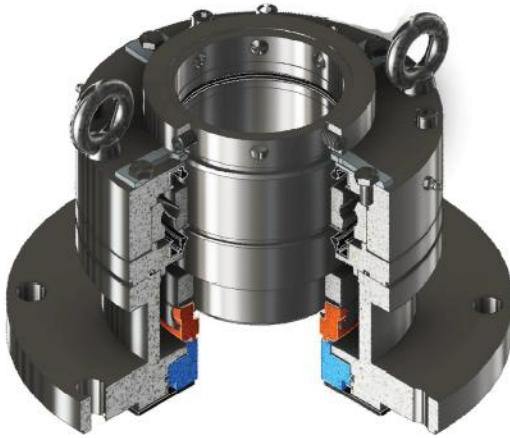




# WET RUNNING SINGLE AGITATOR BALANCE SEAL

## SSMMSB



PN	PART
1	SLEEVE
2	OUTER GLAND RING
2.1	INNER GLAND RING
3	ROTATING FACE
4	STATIONARY FACE
8	ROTATING FACE O-RING
9	STATIONARY FACE O-RING
9.1	STATIONARY FACE GASKET
9.2	STATIONARY FACE GASKET
13	DRIVE COLLAR
16	SPRING
17	SPRING HOLDER
18	GLAND O-RING
19	SLEEVE O-RING
20	RETAINING RING
26	SETTING PLATE
27	SNAP RING
27.1	SNAP RING
30	SET SCREW
30.1	SET SCREW
31	CAP SCREW
32	HEX. BOLT
44	EYE BOLT
48	OIL SEAL
48.1	OIL SEAL
53	HOUSING
60	CIRCLIP
61	BEARING
62	GREASE NIPPLE

### MATERIALS

**Hardware : 316 SS, 304 SS**

**Rotating face : Carbon, SiC, TC**

**Stationary face : SiC, TC**

**Elastomers : FKM, PTFE, Nitrile**

### OPERATING CONDITIONS

**Shaft : 25mm to 160mm**

**Pressure : upto 1.4 MPa**

**Temperature \* : - 40°C ~ 220°C**

**Speed : Upto 3 m/s**

### FEATURES AND BENEFITS

- For Top & Side Entry Drives
- For Glass Lined Reactors
- Single Rotating multi-spring seal
- Flexible rotating face design
- Cartridge designs with or without bearing
- Cartridge design optional
- Modular designs allowing easy part replacement
- Cooling gland & heating gland option
- No barrier fluid or gas required
- Designed for steel and glass lined vessels
- Reverse pressure capability

### RECOMMENDED APPLICATIONS / INDUSTRY

- Heavy Sludges
- Slurries
- Ash Removal
- Process
- Oil & gas
- Petrochemical
- Food & beverage
- Pharmaceutical

Agitator & Mixer in the industry conventionally use mechanical seals that work on the principle of faces lapping onto each other, thereby providing sealing. Our product design provide excellent performance in the application.

\* Depending on material selected

All specifications, instrumentation and capabilities subject to change without notice

P/N: SSMMSB-23

[www.steinseal.in](http://www.steinseal.in)