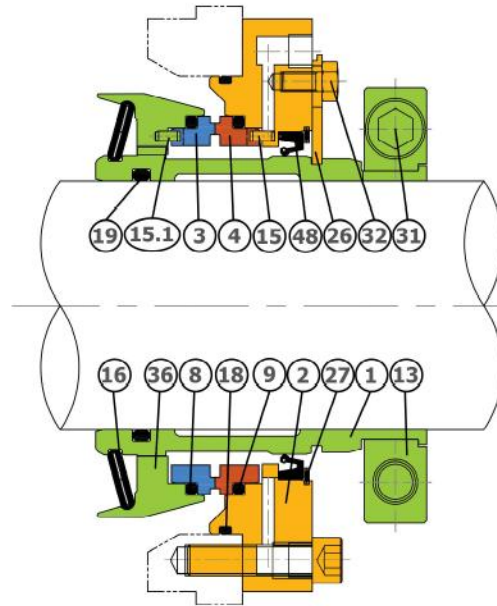
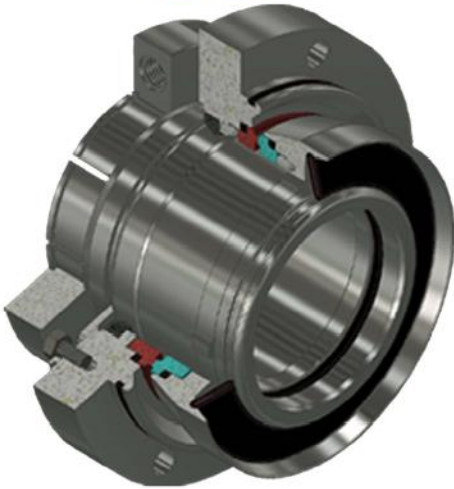




HEAVY DUTY SLURRY SEAL

SSLC



PN	PART
1	--- SLEEVE
2	--- GLAND RING
3	--- ROTATING FACE
4	--- STATIONARY FACE
8	--- ROTATING FACE O-RING
9	--- STATIONARY FACE O-RING
13	--- DRIVE COLLAR
15	--- LOCK PIN
15.1	--- LOCK PIN
16	--- DISC SPRING
18	--- GLAND O-RING
19	--- SLEEVE O-RING
26	--- SETTING PLATE
31	--- CAP SCREW
32	--- HEX. BOLT
36	--- ROTATING FACE BODY
48	--- OIL SEAL

MATERIALS

Hardware : High Chrome Iron,
CD-4MCuN & Other Alloy
Rotating face : SiC, SSiC, TC
Stationary face : SiC, SSiC, TC
Elastomers : EPDM, Neoprene, FKM,
FFKM, Aflas

OPERATING CONDITIONS

Shaft : 35mm to 220mm
Pressure : Upto 15 Bar
Temperature * : Upto 76°C without Quench
Upto 126°C with Water Quench
Speed : Upto 15 m/s
Duty : Abrasive services upto 60% Solids by
Weight

FEATURES AND BENEFITS

- Encapsulated non-clogging cone spring
- Single cartridge designs
- Balanced
- Flexible stationary & rotating face design
- Split drive collar, set screw & shrink disc drive
- All static secondary o-rings
- Interchangeable seal faces
- Limited seal size
- Heavy duty construction

RECOMMENDED APPLICATIONS / INDUSTRY

- Minerals processing
(Alumina, Copper phosphate, Coal, Bauxite & Iron ore)
- Water & Wastewater
- Pulp & Paper
- Steel Production
- Power generation
- Chemical

SSLC series seals are single cartridge designed for slurry pump services found in minerals mining and ore processing. It is built with a non-clogging cone spring that increases seal reliability and enables flush less operation for low operating costs.

* Depending on material selected

All specifications, instrumentation and capabilities subject to change without notice

P/N: SSLC-23

www.steinseal.in